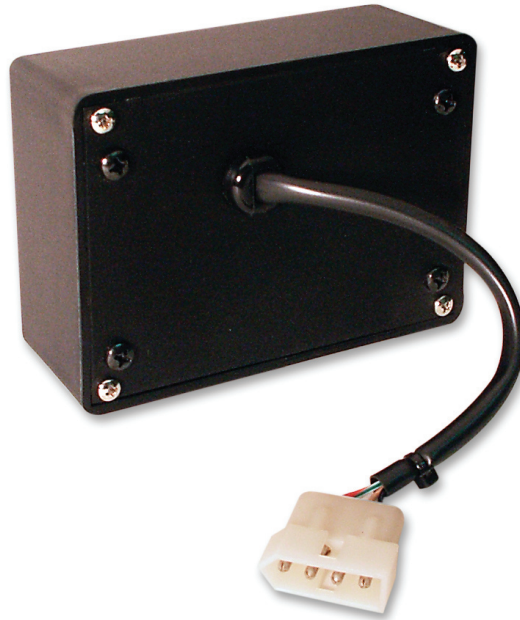


# Sigtronics Power Supply Adapter — PG-PSA

## Installation Instructions



### Power Supply Adapter Features

This genuine Sigtronics engineered and built adapter is used to safely control the power to your Sigtronics systems in vehicles with 24 volt DC or 12 volt positive ground electrical systems.

### Sigtronics Equipment that may be used with PG-PSA

EAI Intercom  
UltraSound Intercom  
S.A.F.E. Communicator  
MRIM-2 Mobile Radio Interface Module

### Installation

Attach the Power Supply Adapter in a convenient location using the included hardware. Verify that the adapter unit and cable will not interfere with the normal operation of any vehicle controls or the operation of vehicle compartment doors. Connect the wiring harness color-for-color to the Sigtronics intercom and vehicle power. See table below.

Sigtronics Power Supply Adapter  
**Input Power:** 12 to 28 Volts DC

Model: **PG-PSA**

**Warranty:** One year parts and labor.

### Standard Equipment Included

Part Description	Part Number	Quantity
Interface Cable	N/A	1
Hex Nut, 6-32, Locking	100067	4
Phillips Head Screw, 6-32 x 5/8, Black	100105	4

### Connector Pinout

Pin	Wire Color	Function	Connect To
1	White / Red	Power Input +	Vehicle Power +
2	White / Black	Power Input -	Vehicle Power -
3	Green	Power Output -	Sigtronics Equipment Green Wire
4	Red	Power Output +	Sigtronics Equipment Red Wire



Made in the U.S.A.

**Specialists in "SOUND" Management**

178 East Arrow Highway, San Dimas, CA 91773 ( 909 ) 305-9399