

The headphone parts may be cleaned with mild soap and water using a soft cloth. Then dry immediately. **Caution: Do Not immerse** any part of the headphone in water or any other liquid. Exposure to moisture may cause internal corrosion and failure and will void your manufacturers warranty.

Cleaning will help the headphone maintain its "like new" condition for many years.

### WARRANTY

Your headphone is covered by a limited two-year parts and labor warranty. Please see the enclosed warranty card for details.

You may refer to the parts list on the reverse side, if you choose to replace parts yourself. The parts list describes parts for this particular headphone only. Parts lists for other models are available on our Web Site or can be obtained by contacting Sigtronics Corporation.



Sigtronics Corporation  
178 East Arrow Highway  
San Dimas, CA 91773  
**Phone:** 909 305-9399  
**E-mail:** info@sigtronics.com  
**Web Site:** www.sigtronics.com

## Model SEH-40 Headphone Instructions

The SEH-40 series of headphones are adjusted at the factory for immediate use with all Sigtronics emergency apparatus intercoms and radio adapters in emergency vehicles. The headphone is equipped with a single plug and a coiled cord.

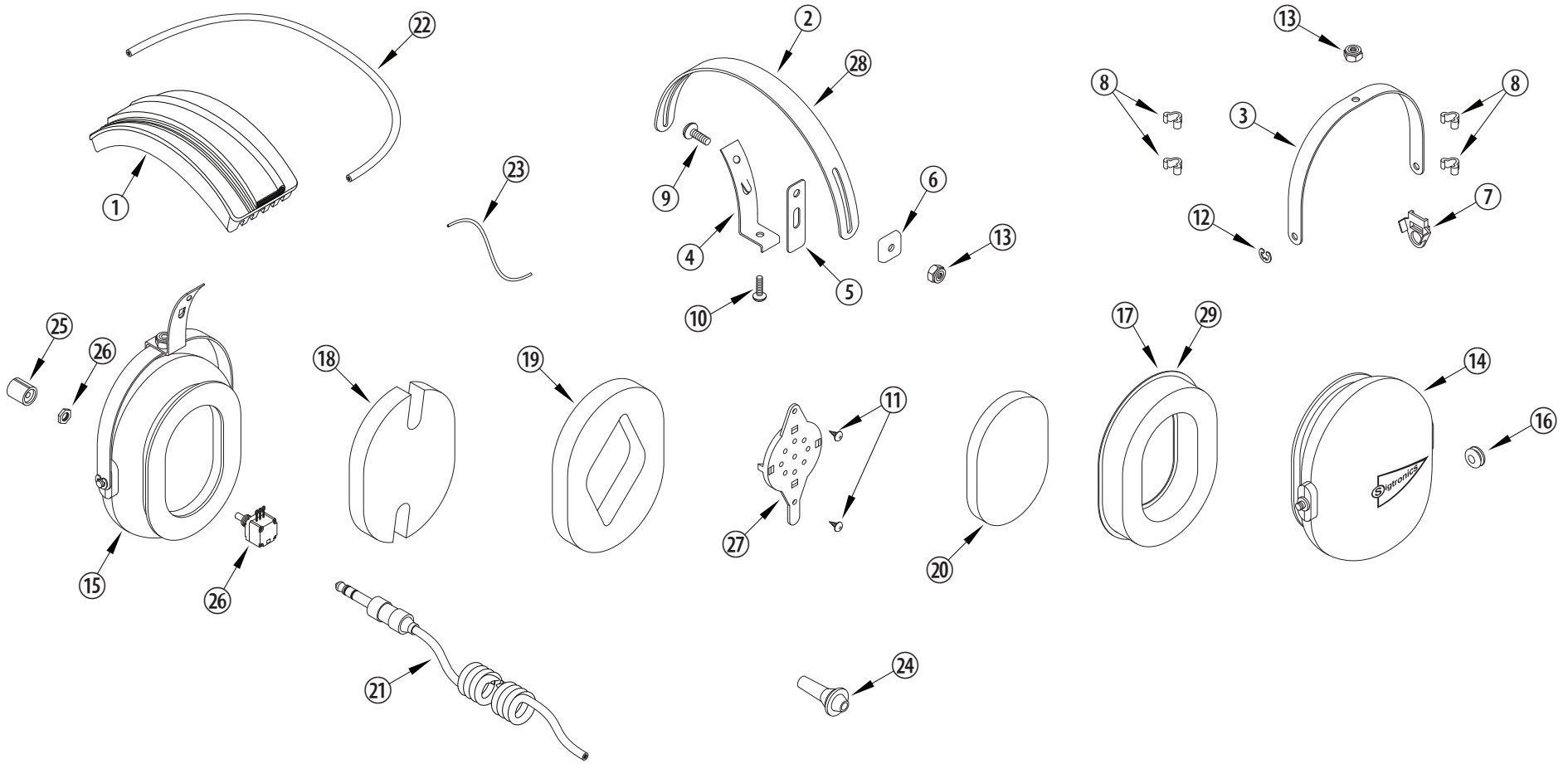
The headband is adjustable through a full range of motion, and the locking nuts may be tightened to allow you to custom fit the headphone. Place the headphone over your head and adjust the slides up until minimum pressure is felt on the top of your head. For maximum noise attenuation, the clamping pressure of the headband has been set at the factory. Releasing the clamping pressure by bending the headband is **not advised**, because loss of attenuation will result.

When you **first connect the headphone**, turn the volume control on the headphone up to the full clockwise position, then adjust the listening volume with the audio control of either your radio or intercom as appropriate. If applicable, crew members should also turn their individual headphone volumes up fully. Doing this allows for a full range of adjustment for each passenger, since those with the most acute hearing can turn their headphone volume down, if necessary.

continued on back...



**...when it counts!**



### SIGTRONICS SEH-40 HEADSET PARTS IDENTIFICATION BREAKDOWN

ITEM	P/N	DESCRIPTION	ITEM	P/N	DESCRIPTION	ITEM	P/N	DESCRIPTION
1	800048	HEADBAND , WITH CUSHION, SE-40	11	100108	SCREW, 4 X 1/4, THREAD FORMING	21	800035	CABLE, HEADSET, STEREO, COILED
2	100602	HEADBAND, METAL, STANDARD, BLACK	12	100251	E-RING, EAR CUP TO YOKE RETAINER	22	100933	WIRE, CROSSOVER, OVER THE HEAD, 28 INCH
3	100603	YOKE, EAR CUP MOUNT, METAL, BLACK	13	100252	NUT, HEX, 8-32, LOCKING	23	100935	WIRE, #22, JUMPER, HEADSET, 4 INCH
4	100604	BRACKET, YOKE SUPPORT WITH TANG, BLACK	14	100981	EAR CUP, PRINTED AND DRILLED, CABLE SIDE	24	100568	STRAIN RELIEF, CABLE
5	100373	SLIDE, YOKE BRACKET, LONG, NYLON	15	100959	EAR CUP, PRINTED AND DRILLED, VOLUME CONTROL SIDE	25	100063	KNOB, 3/8 INCH, BLACK
6	100258	CLIP, HEADBAND GUIDE, PLASTIC	16	100049	GROMMET, 5/16 INCH, RUBBER	26	100077	POTENTIOMETER
7	100393	CLIP, ANTI-ROTATION, YOKE, PLASTIC	17	100369	EAR SEAL, FOAM FILLED	27	100858	RECEIVER AND MOUNT, 300 OHM, MONO
8	100362	CLIP, CROSS-OVER, WIRE, PLASTIC	18	100374	FOAM, SOUND ATTENUATING. NOTCHED, 1/2 INCH	28	100613	OPTIONAL - HEADBAND, METAL, LARGE, BLACK
9	100363	SCREW, 8-32 X 1/2, PHILLIPS HEAD	19	100376	FOAM, SOUND ATTENUATING. RECEIVER HOLE, 1/2 INCH	29	100402	OPTIONAL - EAR SEAL, GEL FILLED
10	100364	SCREW, 8-32 X 3/8, PHILLIPS HEAD	20	100379	FOAM, SOUND ATTENUATING, RECEIVER COVER, 1/4 INCH			