

The headphone parts may be cleaned with mild soap and water using a soft cloth. Then dry immediately. **Caution: Do Not immerse** any part of the headphone in water or any other liquid. Exposure to moisture may cause internal corrosion and failure and will void your manufacturers warranty.

Cleaning will help the headphone maintain its "like new" condition for many years.

### WARRANTY

Your headphone is covered by a limited two-year parts and labor warranty. Please see the enclosed warranty card for details.

You may refer to the parts list on the reverse side, if you choose to replace parts yourself. The parts list describes parts for this particular headphone only. Parts lists for other models are available on our Web Site or can be obtained by contacting Sigtronics Corporation.



Sigtronics Corporation  
178 East Arrow Highway  
San Dimas, CA 91773  
**Phone:** 909 305-9399  
**E-mail:** info@sigtronics.com  
**Web Site:** www.sigtronics.com

## Model SEH-2 Headphone Instructions

The SEH-2 series of headphones are adjusted at the factory for immediate use with all Sigtronics emergency apparatus intercoms and radio adapters in emergency vehicles. The headphone is equipped with a single plug and a coiled cord.

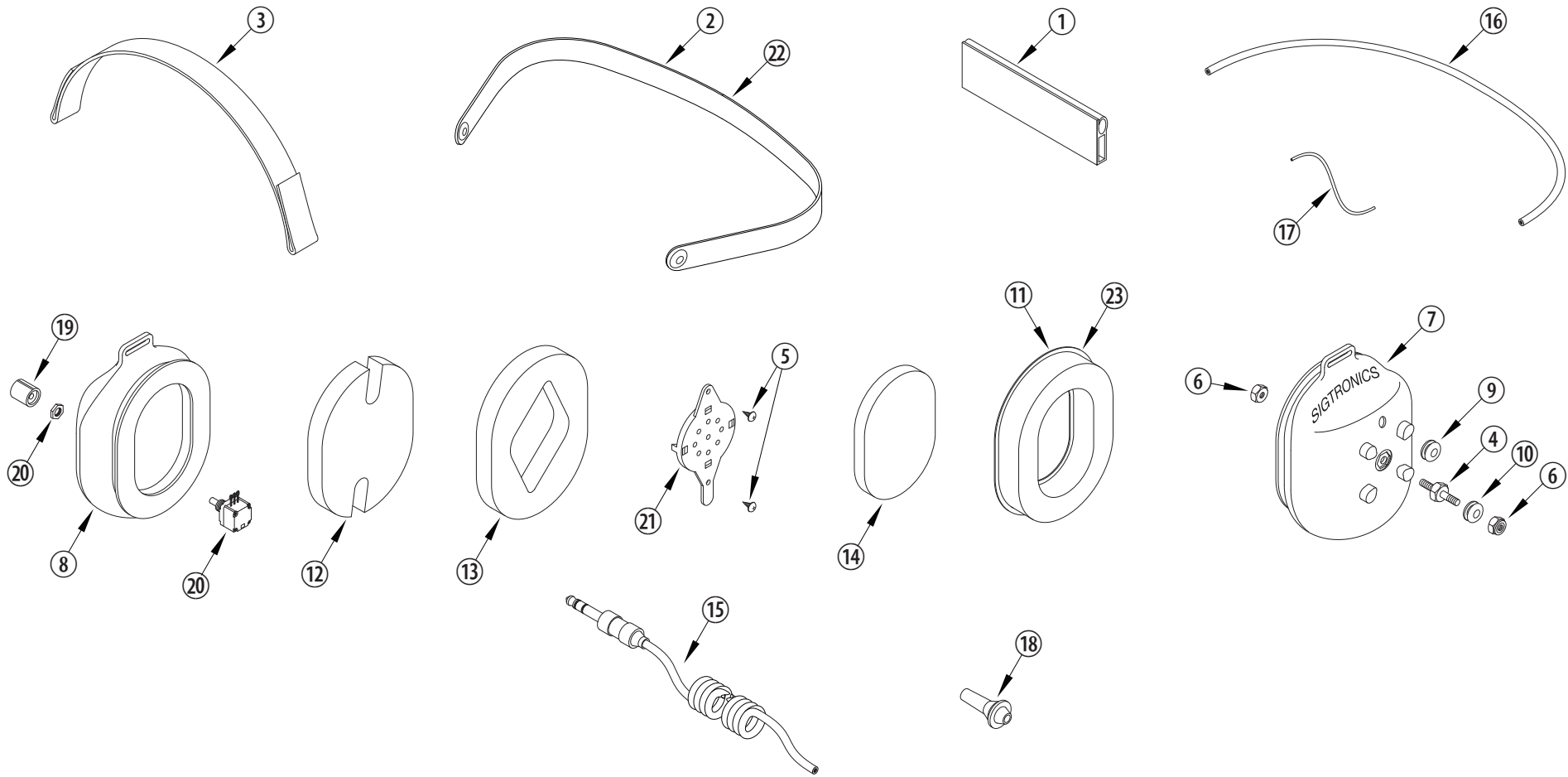
The head strap is adjustable so you may custom fit the headphone. Place the headphone over your head and adjust the strap until minimum pressure is felt on the top of your head. For maximum noise attenuation, the clamping pressure of the headband has been set at the factory. Releasing the clamping pressure by bending the headband is **not advised**, because loss of attenuation will result.

When you **first connect the headphone**, turn the volume control on the headphone up to the full clockwise position, then adjust the listening volume with the audio control of either your radio or intercom as appropriate. If applicable, crew members should also turn their individual headphone volumes up fully. Doing this allows for a full range of adjustment for each passenger, since those with the most acute hearing can turn their headphone volume down, if necessary.

continued on back...



**...when it counts!**



### SIGTRONICS SEH-2 HEADPHONE PARTS IDENTIFICATION BREAKDOWN

ITEM	P/N	DESCRIPTION	ITEM	P/N	DESCRIPTION	ITEM	P/N	DESCRIPTION
1	100413	HEADBAND EXTRUSION, 4 IN., SE-2	9	100049	GROMMET, 5/16 INCH, RUBBER	17	100935	WIRE, #22, JUMPER, HEADSET, 4 INCH
2	800220	HEADBAND, METAL, BLACK, WITH GROMMETS, SE-2	10	100567	GROMMET, SE-2 STUD	18	100568	STRAIN RELIEF, CABLE
3	100411	STRAP, HEADSET, SE-2, BLACK	11	100369	EAR SEAL, FOAM FILLED	19	100063	KNOB, 3/8 INCH, BLACK, VOLUME
4	100451	STUD, SE-2, EAR CUP TO BAND MOUNT	12	100374	FOAM, SOUND ATTENUATING. NOTCHED, 1/2 INCH	20	100077	POTENTIOMETER
5	100108	SCREW, 4-40 X 1/4, THREAD FORMING	13	100376	FOAM, SOUND ATTENUATING. RECEIVER HOLE, 1/2 INCH	21	100858	RECEIVER AND MOUNT, 300 OHM, MONO
6	100252	NUT, HEX, 8-32, LOCKING	14	100379	FOAM, SOUND ATTENUATING, RECEIVER COVER, 1/4 INCH	22	100675	OPTIONAL - HEADBAND, METAL, BLACK, LARGE
7	100980	EAR CUP, PRINTED AND DRILLED, CABLE SIDE	15	800035	CABLE, HEADSET, STEREO, COILED	23	100402	OPTIONAL - EAR SEAL, GEL FILLED
8	100954	EAR CUP, PRINTED AND DRILLED, VOLUME CONTROL SIDE	16	100932	WIRE, CROSSOVER, BEHIND THE HEAD, 23 INCHES			