

he headset parts may be cleaned with mild soap and water using a soft cloth. Then dry immediately. **Caution: Do Not immerse** any part of the headset in water or any other liquid. Be especially careful not to allow the microphone to become wet! Exposure to moisture may cause internal corrosion and failure and will void your manufacturers warranty.

Cleaning will help the headset maintain its "like new" condition for many years.

WINDSCREEN

The microphone windscreen will reduce annoying wind noise and breath pops picked up by headset microphones. It also protects the microphone element from dirt and moisture. The windscreen should be washed regularly to maintain hygiene and avoid clogging. Wash in warm water and mild soap. Rinse thoroughly and make sure it is completely dry before putting it back on.

To remove the windscreen, carefully grasp the windscreen lightly along its entire length and remove from the microphone element being careful not to twist the element itself.

Put the windscreen on the microphone by gently pulling from the open end. Do not pull it so tightly that it stretches against the end of the microphone.

WARRANTY

Your headset is covered by a limited two-year parts and labor warranty. Please see the enclosed warranty card for details.

You may refer to the parts list on the reverse side, if you choose to replace parts yourself. The parts list describes parts for this particular headset only. Parts lists for other models are available on our Web Site or can be obtained by contacting Sigtronics Corporation.



Sigtronics Corporation
178 East Arrow Highway
San Dimas, CA 91773
Phone: 909 305-9399
E-mail: info@sigtronics.com
Web Site: www.sigtronics.com

Model SE-48RVC Headset Instructions

The SE-48RVC series headset is adjusted at the factory for immediate use. The headset is equipped with a single plug and a coiled cord.

The headband is adjustable through a full range of motion, and the locking nuts may be tightened to allow you to custom fit the headphone. Place the headphone over your head and adjust the slides up until minimum pressure is felt on the top of your head. For maximum noise attenuation, the clamping pressure of the headband has been set at the factory. Releasing the clamping pressure by bending the headband is **not advised**, because loss of attenuation will result.

The microphone boom is fully adjustable and will rotate 180 degrees for use on the left or right side of the head.

Make sure you are speaking into the side of the mic labeled "Talk" or substantial loss of gain will occur. Microphone placement should be at the corner of the mouth, approximately 1/4" from the lips.

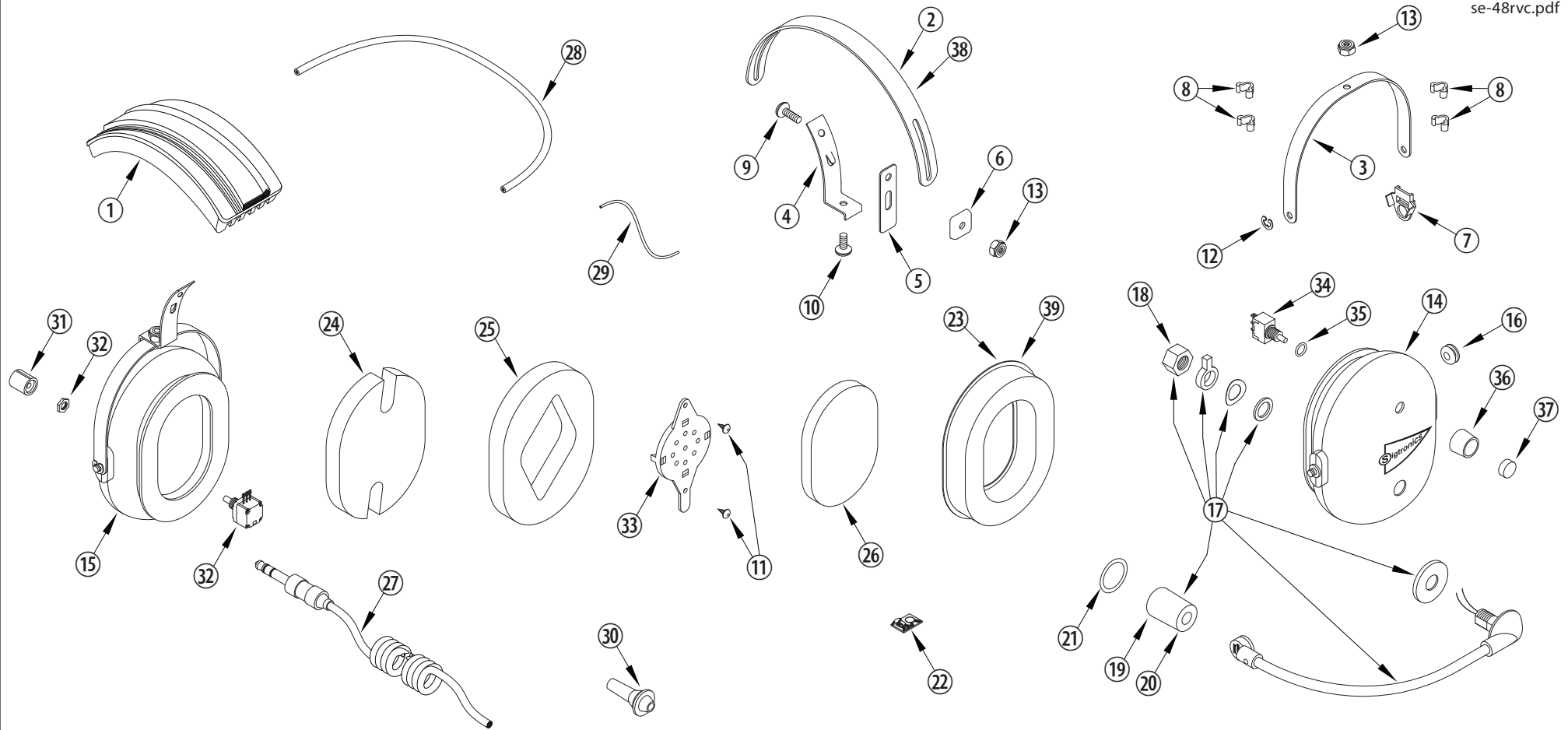
Your SE-48RVC headset has a push on, push off switch located on the mic side ear cup. The mic is operative only when the switch is in the on position. For intercom and radio function, switch on the mic to talk.

When you **first connect the headset**, turn the volume control on the headset up to the full clockwise position, then adjust the listening volume with the audio control of either your radio or intercom as appropriate. If applicable, crew members should also turn their individual headset volumes up fully. Doing this allows for a full range of adjustment for each passenger, since those with the most acute hearing can turn their headset volume down, if necessary.

continued on back...



...when it counts!



SIGTRONICS SE-48RVC HEADSET PARTS IDENTIFICATION BREAKDOWN

ITEM	P/N	DESCRIPTION	ITEM	P/N	DESCRIPTION	ITEM	P/N	DESCRIPTION
1	800197	HEADBAND , WITH CUSHION, SE-48	14	100963	EAR CUP, PRINTED AND DRILLED, MICROPHONE SIDE	27	800035	CABLE, HEADSET, STEREO, COILED
2	100602	HEADBAND, METAL, STANDARD, BLACK	15	100959	EAR CUP, PRINTED AND DRILLED, VOLUME CONTROL SIDE	28	100933	WIRE, CROSSOVER, OVER THE HEAD, 28 INCH
3	100603	YOKE, EAR CUP MOUNT, METAL, BLACK	16	100049	GROMMET, 5/16 INCH, RUBBER	29	100935	WIRE, #22, JUMPER, HEADSET, 4 INCH
4	100604	BRACKET, YOKE SUPPORT WITH TANG, BLACK	17	800193	MICROPHONE & FLEX BOOM ASSEMBLY	30	100568	STRAIN RELIEF, CABLE
5	100373	SLIDE, YOKE BRACKET, LONG, NYLON	18	100597	NUT, HEX, 3/8-24, FLEX BOOM ADAPTER	31	100063	KNOB, 3/8 INCH, BLACK
6	100258	CLIP, HEADBAND GUIDE, PLASTIC	19	100611	WINDSCREEN, MICROPHONE, FOAM, BULK	32	100077	POTENTIOMETER
7	100393	CLIP, ANTI-ROTATION, YOKE, PLASTIC	20	900111	WINDSCREEN, MICROPHONE, FOAM, PACKAGED	33	100858	RECEIVER AND MOUNT, 300 OHM, MONO
8	100362	CLIP, CROSS-OVER, WIRE, PLASTIC	21	100612	O-RING, WINDSCREEN RETAINER, SE-48	34	100706	SWITCH, SPDT, ON / OFF
9	100363	SCREW, 8-32 X 1/2, PHILLIPS HEAD	22	800192	PREAMP	35	100625	O-RING, PTT, HEADSET
10	100364	SCREW, 8-32 X 3/8, PHILLIPS HEAD	23	100369	EAR SEAL, FOAM FILLED	36	100708	SWITCHGUARD, PTT, NICKEL
11	100108	SCREW, 4-40 X 1/4, THREAD FORMING	24	100374	FOAM, SOUND ATTENUATING. NOTCHED, 1/2 INCH	37	100707	BUTTON, SWITCH, PTT, BLACK
12	100251	E-RING, EAR CUP TO YOKE RETAINER	25	100376	FOAM, SOUND ATTENUATING. RECEIVER HOLE, 1/2 INCH	38	100613	OPTIONAL - HEADBAND, METAL, LARGE, BLACK
13	100252	NUT, HEX, 8-32, LOCKING	26	100379	FOAM, SOUND ATTENUATING, RECEIVER COVER, 1/4 INCH	39	100402	OPTIONAL - EAR SEAL, GEL FILLED