

The headset parts may be cleaned with mild soap and water using a soft cloth. Then dry immediately. **Caution: Do Not immerse** any part of the headset in water or any other liquid. Be especially careful not to allow the microphone to become wet! Exposure to moisture may cause internal corrosion and failure and will void your manufacturers warranty.

Cleaning will help the headset maintain its "like new" condition for many years.

WINDSCREEN

The microphone windscreen will reduce annoying wind noise and breath pops picked up by headset microphones. It also protects the microphone element from dirt and moisture. The windscreen should be washed regularly to maintain hygiene and avoid clogging. Wash in warm water and mild soap. Rinse thoroughly and make sure it is completely dry before putting it back on.

To remove the windscreen, take out the screw that holds the microphone on the boom and grasp the windscreen lightly along its entire length and slip it off.

Put the windscreen on the microphone by gently pulling from the open end. Do not pull it so tightly that it stretches against the end of the microphone.

WARRANTY

Your headset is covered by a limited two-year parts and labor warranty. Please see the enclosed warranty card for details.

You may refer to the parts list on the reverse side, if you choose to replace parts yourself. The parts list describes parts for this particular headset only. Parts lists for other models are available on our Web Site or can be obtained by contacting Sigtronics Corporation.



Sigtronics Corporation
178 East Arrow Highway
San Dimas, CA 91773
Phone: 909 305-9399
E-mail: info@sigtronics.com
Web Site: www.sigtronics.com

Model SE-40SRPTT Headset Instructions

The SE-40SRPTT series headset is adjusted at the factory for immediate use. The headset is equipped with a single plug and a coiled cord.

The headband is adjustable through a full range of motion, and the locking nuts may be tightened to allow you to custom fit the headphone. Place the headphone over your head and adjust the slides up until minimum pressure is felt on the top of your head. For maximum noise attenuation, the clamping pressure of the headband has been set at the factory. Releasing the clamping pressure by bending the headband is **not advised**, because loss of attenuation will result.

The microphone boom is fully adjustable and will rotate 180 degrees for use on the left or right side of the head. The locking screw that secures the boom to the ear cup is factory set to insure the correct tension. Turning it will not change the tension, because the nut on the inside of the cup will turn as well.

Microphone placement should be at the corner of the mouth, approximately ¼" from the lips. The exclusive thumb screw on the mic boom may be used to assure proper placement.

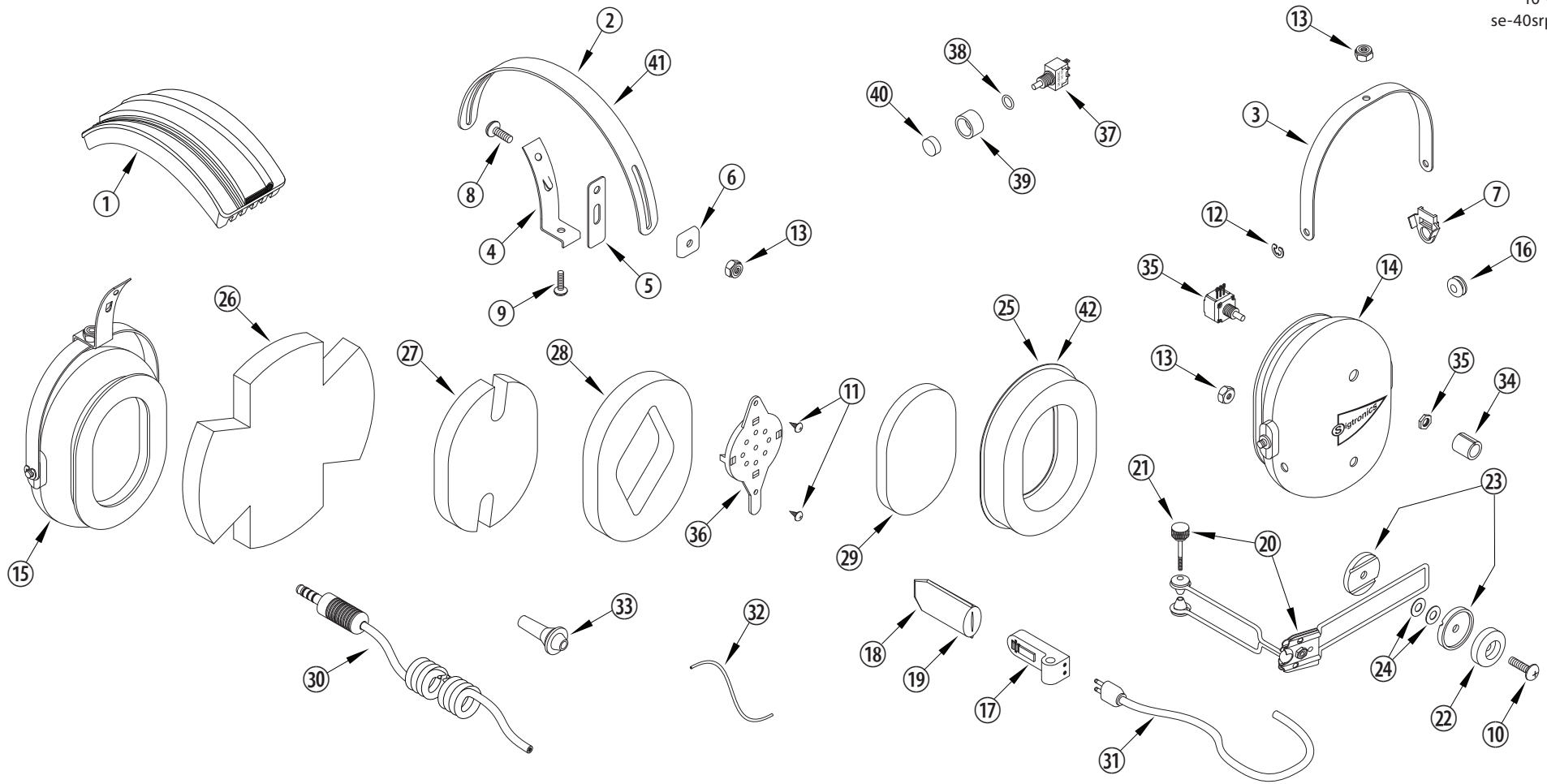
Your SE-40SRPTT headset has a push to transmit switch located on the mic side ear cup. When the headset is connected to a radio, depressing this switch will cause the radio to transmit. The switch is **not used** for intercom function.

When you **first connect the headset**, turn the volume control on the headset up to the full clockwise position, then adjust the listening volume with the audio control of either your radio or intercom as appropriate. If applicable, crew members should also turn their individual headset volumes up fully. Doing this allows for a full range of adjustment for each passenger, since those with the most acute hearing can turn their headset volume down, if necessary.

continued on back...



...when it counts!



SIGTRONICS SE-40SRPTT HEADSET PARTS IDENTIFICATION BREAKDOWN

ITEM	P/N	DESCRIPTION	ITEM	P/N	DESCRIPTION	ITEM	P/N	DESCRIPTION
1	800048	HEADBAND , WITH CUSHION, SE-40	15	100962	EAR CUP, SLOTTED, PRINTED, NON-MIC SIDE	29	100379	FOAM, SOUND ATTENUATING, RECEIVER COVER, 1/4 INCH
2	100602	HEADBAND, METAL, STANDARD, BLACK	16	100049	GROMMET, 5/16 INCH, RUBBER	30	800046	CABLE, HEADSET, COILED
3	100603	YOKE, EAR CUP MOUNT, METAL, BLACK	17	800082	MICROPHONE, ELECTRET, M-80	31	800039	CABLE, MICROPHONE BOOM, 12 INCH
4	100604	BRACKET, YOKE SUPPORT WITH TANG, BLACK	18	100415	WINDSCREEN, MICROPHONE, FOAM, BULK	32	100935	WIRE, #22, JUMPER, HEADSET, 4 INCH
5	100373	SLIDE, YOKE BRACKET, LONG, NYLON	19	900084	WINDSCREEN, MICROPHONE, FOAM, PACKAGED	33	100569	STRAIN RELIEF, CABLE
6	100258	CLIP, HEADBAND GUIDE, PLASTIC	20	100249	BOOM, ELECTRET MICROPHONE SUPPORT, SWIVEL	34	100063	KNOB, 3/8 INCH, BLACK
7	100393	CLIP, ANTI-ROTATION, YOKE, PLASTIC	21	100156	SCREW, THUMB, MICROPHONE BOOM, 2-56 X 1	35	100077	POTENTIOMETER
8	100363	SCREW, 8-32 X 1/2, PHILLIPS HEAD	22	100368	KNOB, MICROPHONE BOOM ADAPTER, PLASTIC	36	100858	RECEIVER AND MOUNT, 300 OHM, MONO
9	100364	SCREW, 8-32 X 3/8, PHILLIPS HEAD	23	100408	WASHER, GROOVED BOOM	37	100232	SWITCH, SPDT, MOMENTARY
10	100377	SCREW, 8-32 X 5/8, PHILLIPS HEAD	24	100385	WASHER, SPRING, BOOM ADAPTER	38	100625	O-RING, PTT, HEADSET
11	100108	SCREW, 4 X 1/4, THREAD FORMING	25	100369	EAR SEAL, FOAM FILLED	39	100428	SWITCHGUARD, PTT, BLACK
12	100251	E-RING, EAR CUP TO YOKE RETAINER	26	100684	FOAM, SOUND ATTENUATING, FOR SLOTTED EAR CUP ONLY	40	100317	BUTTON, SWITCH, PTT, RED
13	100252	NUT, HEX, 8-32, LOCKING	27	100374	FOAM, SOUND ATTENUATING. NOTCHED, 1/2 INCH	41	100613	OPTIONAL - HEADBAND, METAL, LARGE, BLACK
14	100973	EAR CUP, PRINTED AND DRILLED, MICROPHONE SIDE	28	100376	FOAM, SOUND ATTENUATING. RECEIVER HOLE, 1/2 INCH	42	100402	OPTIONAL - EAR SEAL, GEL FILLED