

The headphone parts may be cleaned with mild soap and water using a soft cloth. Then dry immediately. **Caution: Do Not immerse** any part of the headphone in water or any other liquid. Exposure to moisture may cause internal corrosion and failure and will void your manufacturers warranty.

Cleaning will help the headphone maintain its "like new" condition for many years.

WARRANTY

Your headphone is covered by a limited three-year parts and labor warranty. Please see the enclosed warranty card for details.

You may refer to the parts list on the reverse side, if you choose to replace parts yourself. The parts list describes parts for this particular headphone only. Parts lists for other models are available on our Web Site or can be obtained by contacting Sigtronics Corporation



Sigtronics Corporation
178 East Arrow Highway
San Dimas, CA 91773
Phone: 909 305-9399
E-mail: info@sigtronics.com
Web Site: www.sigtronics.com

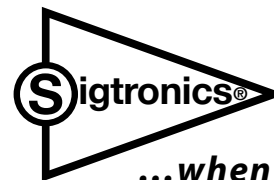
Model SH-40C Headphone Instructions

The SH-40C series headphones are adjusted at the factory for immediate use with all current standard radio systems in general aviation aircraft. SH-40C headphones are equipped with one plug in the standard configuration. The headphone plug is a large diameter plug and should be inserted into the headphone jack (.250" standard monaural jack).

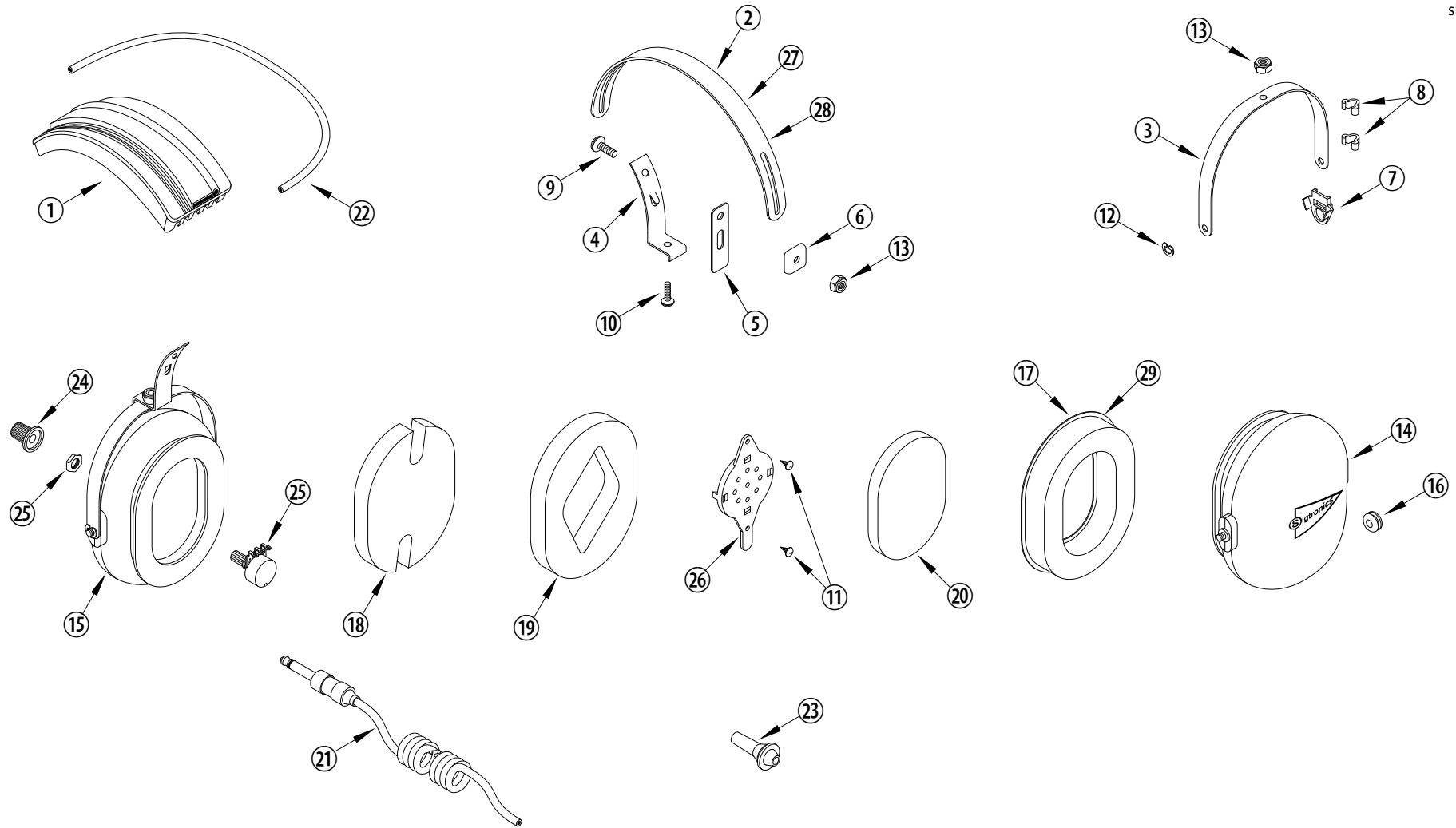
The headband is adjustable through a full range of motion, or the locking nuts may be tightened to allow you to custom fit the headphone. Place the headphone over your head, adjust the slides up until minimum pressure is felt on the top of your head. The headphone is now properly adjusted. For maximum noise attenuation, the clamping pressure has been set at the factory. Releasing the clamping pressure by bending the headband is not advised, because loss of attenuation will result. Note: If especially small (children) or large headbands are needed, they may be ordered from Sigtronics.

When you first connect the headphone, turn the volume control on the headphone up to the full clockwise position, then adjust the listening volume with the audio control of either your radio or intercom as appropriate. Passengers should also turn their individual headphone volumes up fully. Doing this allows for a full range of adjustment for each passenger, since those with the most acute hearing can turn their headphone volume down, if necessary.

continued on back...



...when it counts!



SIGTRONICS SH-40C HEADPHONE PARTS IDENTIFICATION BREAKDOWN

ITEM	P/N	DESCRIPTION	ITEM	P/N	DESCRIPTION	ITEM	P/N	DESCRIPTION
1	800145	HEADBAND , WITH CUSHION, S-40	11	100108	SCREW, 4 X 1/4, THREAD FORMING	21	800034	CABLE, HEADPHONE, MONAURAL, COILED
2	100383	HEADBAND, METAL, STANDARD	12	100251	E-RING, EAR CUP TO YOKE RETAINER	22	100933	WIRE, CROSSOVER, OVER THE HEAD, 28 INCH
3	100367	YOKE, EAR CUP MOUNT, METAL	13	100252	NUT, HEX, 8-32, LOCKING	23	100568	STRAIN RELIEF, CABLE
4	100384	BRACKET, YOKE SUPPORT WITH TANG	14	100981	EAR CUP, PRINTED AND DRILLED, CABLE SIDE	24	100360	KNOB, BLACK, VOLUME
5	100373	SLIDE, YOKE BRACKET, LONG, NYLON	15	100938	EAR CUP, PRINTED AND DRILLED, VOLUME CONTROL SIDE	25	100365	POTENTIOMETER, 2K
6	100258	CLIP, HEADBAND GUIDE, PLASTIC	16	100049	GROMMET, 5/16 INCH, RUBBER	26	100858	RECEIVER AND MOUNT, 300 OHM, MONO
7	100393	CLIP, ANTI-ROTATION, YOKE, PLASTIC	17	900123	EAR SEAL, FOAM FILLED, SET OF TWO	27	100618	OPTIONAL - HEADBAND, METAL, YOUTH
8	100362	CLIP, CROSS-OVER, WIRE, PLASTIC	18	100374	FOAM, SOUND ATTENUATING. NOTCHED, 1/2 INCH	28	100257	OPTIONAL - HEADBAND, METAL, LARGE
9	100363	SCREW, 8-32 X 1/2, PHILLIPS HEAD	19	100376	FOAM, SOUND ATTENUATING. RECEIVER HOLE, 1/2 INCH	29	900124	OPTIONAL - EAR SEAL, GEL FILLED, SET OF TWO
10	100364	SCREW, 8-32 X 3/8, PHILLIPS HEAD	20	100379	FOAM, SOUND ATTENUATING, RECEIVER COVER, 1/4 INCH			