

Test the headset in the ON (—) and OFF (O) modes on the ramp prior to take off. If there is a problem in the ON (—) position then use in the OFF (O) position. The S-AR is completely fail-safe and will continue to work even if power to the headset is lost. If the power to the headset is unstable, simply turn off power and use headset in the OFF (O) position. The S-AR performs best when using high quality Alkaline batteries. The life of these high quality batteries should last 20 hours minimum. To guard against accidentally leaving the power on, unplug the power cable from the power module when not in use. **DO NOT ATTEMPT TO POWER THE S-AR DIRECTLY FROM YOUR AIRCRAFT** electrical system without using our panel mount power system. This system will give clean stable power to the S-AR.

CLEANING

Headset parts may be cleaned with mild soap on a soft damp cloth. Then dry immediately. **CAUTION: DO NOT** immerse any part of the headset in water or any other liquid. Be especially careful not to allow the microphone to become wet! Exposure to moisture may cause internal corrosion and failure and will void your manufacturers warranty.

Cleaning will help the headset maintain its "like new "condition for many years.

WINDSCREEN

The microphone windscreen will reduce annoying wind noise and breath pops picked up by headset microphones. It also protects the microphone element from dirt and moisture. The windscreen should be washed regularly to maintain hygiene and avoid clogging. Wash in warm water and mild soap. Rinse thoroughly and make sure it is completely dry before putting it back on.

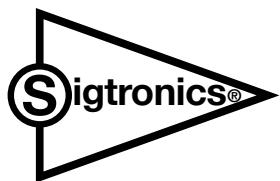
To remove the windscreen, carefully grasp the windscreen lightly along its entire length and remove from the microphone element being careful not to twist the element itself.

Put the windscreen on the microphone by gently pulling from the open end. Do not pull it so tightly that it stretches against the end of the microphone.

WARRANTY

Your headset is covered by a limited three-year parts and labor warranty. Please see the enclosed warranty card for details.

You may refer to the parts list on the reverse side, if you choose to replace parts yourself. The parts list describes parts for this particular headset only. Parts lists for other models are available on our Web Site or can be obtained by contacting Sigtronics Corporation.



Sigtronics Corporation
178 East Arrow Highway
San Dimas, CA 91773
Phone: 909 305-9399
E-mail: info@sigtronics.com
Web Site: www.sigtronics.com

Model S-AR Headset Instructions

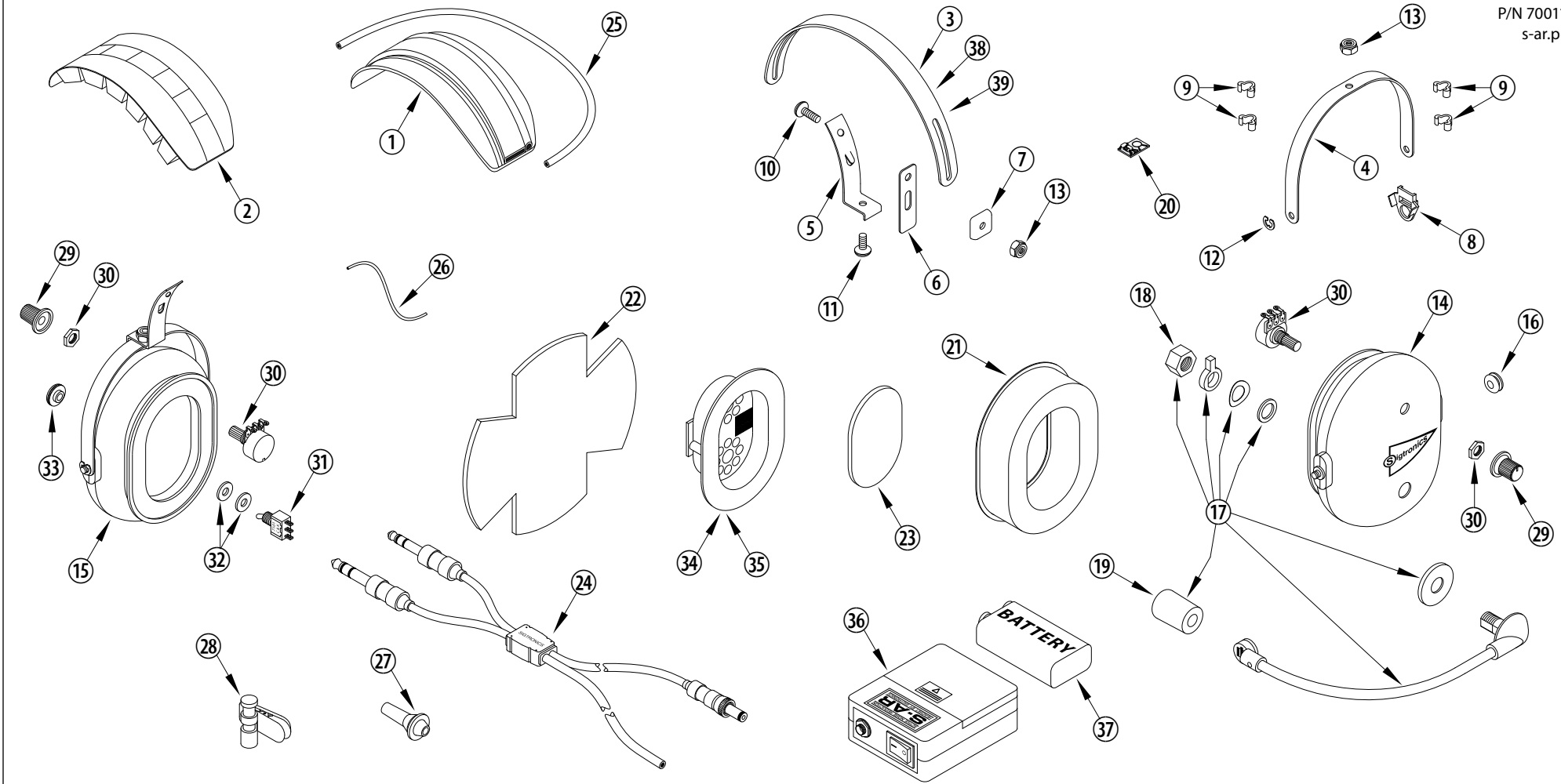
The S-AR series headsets are adjusted at the factory for immediate use with all current standard radio systems in general aviation aircraft. Headsets equipped with two plugs are the standard configuration. The headphone plug is the larger diameter plug and should be inserted into the headphone jack (.250" standard stereo or monaural jack). The mic plug is the smaller diameter plug and should be inserted into the microphone jack (.206" standard microphone jack). The S-AR stereo headset has dual volume controls, a stereo headphone plug, and a stereo-mono switch for operation with either stereo or monaural systems.

The headband is adjustable through a full range of adult sizes, or the locking nuts may be tightened to allow you to custom fit the headset. Place the headset over your head, adjust the slides up until minimum pressure is felt on the top of your head. The headset is now properly adjusted. For maximum noise attenuation, the clamping pressure has been set at the factory. Releasing the clamping pressure by bending the headband is not advised, because loss of attenuation will result. **Note:** If especially small (youth size) or large headbands are needed, they may be ordered from Sigtronics.

The microphone boom is fully adjustable and will rotate 180 degrees. For best results use with the microphone on the left side of the head. **Make sure you are speaking into the side of the mic labeled "Talk" or substantial loss of gain will occur. Microphone placement should be at the corner of the mouth, approximately 1/4" from the lips.** Sigtronics ultra-deep gel ear seals will provide for best performance. Do not insert any material into the ear cups.

When you **first connect the headset**, make sure the stereo / mono switch is in the proper position (i.e. in the "MONO" position if plugged in a mono jack or in the "STEREO" position if plugged into a stereo jack). With the S-AR power plug securely fastened to the battery box power jack, push the power switch to the ON (—) position. Turn both volume controls on the headset up to maximum volume. For the mic side volume control, maximum volume is full clockwise. For the switch side volume control, maximum volume is full counter-clockwise. Adjust the listening volume with the audio control of either your radio or intercom as appropriate. Passengers should also turn their individual headset volumes up fully. Doing this allows for a full range of adjustment for each passenger, since those with the most acute hearing can turn their headset volume down, if necessary.

continued on back...



SIGTRONICS S-AR HEADSET PARTS IDENTIFICATION BREAKDOWN

ITEM	P/N	DESCRIPTION	ITEM	P/N	DESCRIPTION	ITEM	P/N	DESCRIPTION
1	100687	HEAD BAND EXTRUSION, 6.25 IN., S-AR	14	100949	EAR CUP, PRINTED AND DRILLED, MICROPHONE SIDE	27	100569	STRAIN RELIEF, CABLE
2	100610	CUSHION, HEADBAND, FOAM FILLED	15	100950	EAR CUP, PRINTED AND DRILLED, SWITCH SIDE	28	100579	CLIP, CLOTHING, HEADSET CABLE
3	100602	HEADBAND, METAL, BLACK, STANDARD	16	100049	GROMMET, 5/16 INCH, RUBBER	29	100360	KNOB, BLACK, VOLUME
4	100603	YOKE, EAR CUP MOUNT, METAL, BLACK	17	800044	MICROPHONE & FLEX BOOM ASSEMBLY	30	100365	POTENTIOMETER, 2K
5	100604	BRACKET, YOKE SUPPORT WITH TANG, BLACK	18	100597	NUT, HEX, 3/8-24, FLEX BOOM ADAPTER	31	100509	SWITCH, STEREO / MONO
6	100373	SLIDE, YOKE BRACKET, LONG, NYLON	19	900111	WINDSCREEN, MIC, 8 SERIES	32	100508	WASHER
7	100258	CLIP, HEADBAND GUIDE, PLASTIC	20	800250	PREAMP	33	100507	NUT, STEREO / MONO SWITCH
8	100393	CLIP, ANTI-ROTATION, YOKE, PLASTIC	21	900125	EAR SEAL, GEL / FOAM FILLED, SET OF TWO	34	100754	RECEIVER MODULE — SWITCH SIDE
9	100362	CLIP, CROSS-OVER, WIRE, PLASTIC	22	100684	FOAM, SOUND ATTENUATING	35	100755	RECEIVER MODULE — MICROPHONE SIDE
10	100363	SCREW, 8-32 X 1/2, PHILLIPS HEAD	23	100685	SOUND ATTENUATING, RECEIVER COVER	36	800114	POWER MODULE, BATTERY
11	100364	SCREW, 8-32 X 3/8, PHILLIPS HEAD	24	800116	CABLE, HEADSET, STEREO	37	100179	BATTERY, 9 VOLT
12	100251	E-RING, EAR CUP TO YOKE RETAINER	25	100934	WIRE, CROSSOVER, OVER THE HEAD, 30 INCHES	38	100613	OPTIONAL – HEADBAND, METAL, BLACK, LARGE
13	100252	NUT, HEX, 8-32, LOCKING	26	100935	WIRE, #22, JUMPER, HEADSET, 4 INCH	39	100672	OPTIONAL – HEADBAND, METAL, BLACK, YOUTH