

The headset parts may be cleaned with mild soap and water using a soft cloth. Then dry immediately. **Caution: Do Not immerse** any part of the headset in water or any other liquid. Be especially careful not to allow the microphone to become wet! Exposure to moisture may cause internal corrosion and failure and will void your manufacturers warranty.

Cleaning will help the headset maintain its "like new" condition for many years.

WINDSCREEN

The microphone windscreen will reduce annoying wind noise and breath pops picked up by headset microphones. It also protects the microphone element from dirt and moisture. The windscreen should be washed regularly to maintain hygiene and avoid clogging. Wash in warm water and mild soap. Rinse thoroughly and make sure it is completely dry before putting it back on.

To remove the windscreen, take out the screw that holds the microphone on the boom and grasp the windscreen lightly along its entire length and slip it off.

Put the windscreen on the microphone by gently pulling from the open end. Do not pull it so tightly that it stretches against the end of the microphone.

WARRANTY

Your headset is covered by a limited five-year parts and labor warranty. Please see the enclosed warranty card for details.

You may refer to the parts list on the reverse side, if you choose to replace parts yourself. The parts list describes parts for this particular headset only. Parts lists for other models are available on our Web Site or can be obtained by contacting Sigtronics Corporation.



Sigtronics Corporation
178 East Arrow Highway
San Dimas, CA 91773
Phone: 909 305-9399
E-mail: info@sigtronics.com
Web Site: www.sigtronics.com

Model S-65H Headset Instructions

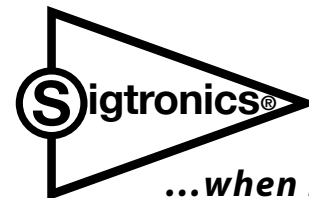
The S-65H series headsets are adjusted at the factory for immediate use with all standard general aviation radio systems utilizing the U174/U jack. Headsets are equipped with a coiled cable and a single U174/U plug configuration.

The headband is adjustable through a full range of motion, or the locking nuts may be tightened to allow you to custom fit the headset. Place the headset over your head, adjust the slides up until minimum pressure is felt on the top of your head. The headset is now properly adjusted. For maximum noise attenuation, the clamping pressure has been set at the factory. Releasing the clamping pressure by bending the headband is not advised, because loss of attenuation will result. **Note:** If especially small (children) or large headbands are needed, they may be ordered from Sigtronics.

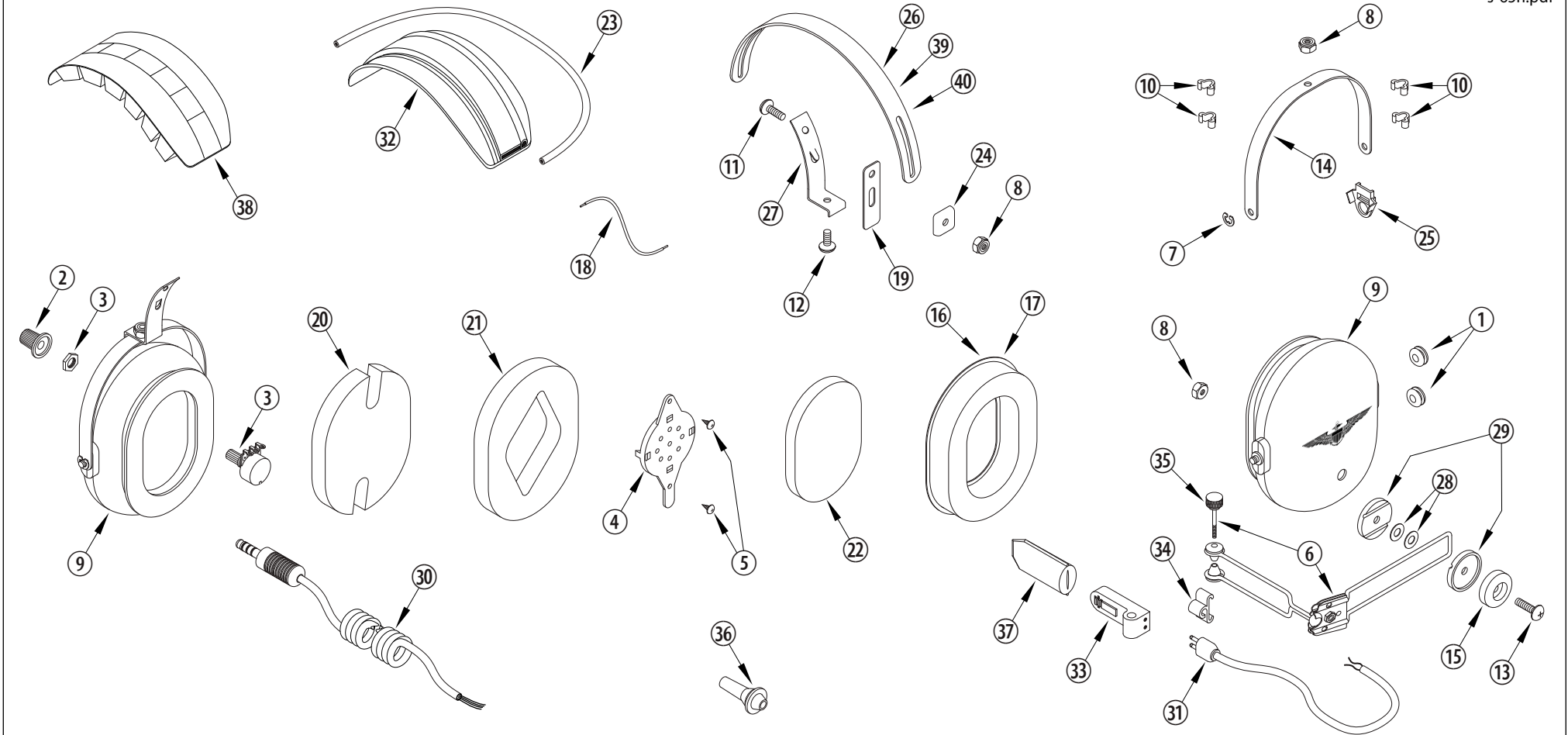
The microphone boom is fully adjustable and will rotate 360 degrees for use on the left or right side of the head. The locking screw that secures the boom to the ear cup is factory set to insure the correct tension. Turning it will not change the tension, because the nut on the inside of the cup will turn as well. **Microphone placement should be at the corner of the mouth, approximately ¼" from the lips.** The exclusive thumbscrew on the mic boom may be used to assure proper adjustment.

When you first connect the headset, turn the volume control on the headset up to the full clockwise position, then adjust the listening volume with the audio control of either your radio or intercom as appropriate. Passengers should also turn their individual headset volumes up fully. Doing this allows for a full range of adjustment for each passenger, since those with the most acute hearing can turn their headset volume down, if necessary.

continued on back...



...when it counts!



SIGTRONICS S-65H HEADSET PARTS IDENTIFICATION BREAKDOWN

ITEM	P/N	DESCRIPTION	ITEM	P/N	DESCRIPTION	ITEM	P/N	DESCRIPTION
1	100049	GROMMET, 5/16 INCH, RUBBER	15	100368	KNOB, MICROPHONE BOOM ADAPTER, PLASTIC	29	100408	WASHER, GROOVED BOOM
2	100360	KNOB, BLACK, VOLUME	16	900123	EAR SEAL, FOAM FILLED, SET OF TWO	30	800046	CABLE, HEADSET, COILED
3	100365	POTENTIOMETER, 2K	17	900124	EAR SEAL, GEL FILLED, SET OF TWO	31	800039	CABLE, MICROPHONE BOOM, 12 INCH
4	100858	RECEIVER AND MOUNT, 300 OHM, MONO	18	100935	WIRE, JUMPER, #22, 4 INCHES	32	100752	HEADBAND EXTRUSION, 6.25 IN., BLANK
5	100108	SCREW, 4-40 X 1/4, THREAD FORMING	19	100373	SLIDE, YOKE BRACKET, LONG, NYLON	33	M-80H	MICROPHONE, ELECTRET, M-80H
6	100525	BOOM, ELECTRET MICROPHONE SUPPORT, SWIVEL	20	100374	FOAM, SOUND ATTENUATING. NOTCHED, 1/2 INCH	34	100371	MICROPHONE CABLE CLIP
7	100743	E-RING, EAR CUP TO YOKE RETAINER, BLACK	21	100376	FOAM, SOUND ATTENUATING. RECEIVER HOLE, 1/2 INCH	35	100532	SCREW, THUMB, MICROPHONE BOOM, 2-56 X 1
8	100524	NUT, HEX, 8-32, LOCKING	22	100379	FOAM, SOUND ATTENUATING, RECEIVER COVER, 1/4 INCH	36	100569	STRAIN RELIEF, CABLE
9	100526	EAR CUP, PRINTED AND DRILLED, MIC & NON MIC SIDE	23	100933	WIRE, CROSSOVER, OVER THE HEAD, 28 INCH	37	900084	WINDSCREEN, MICROPHONE
10	100362	CLIP, CROSS-OVER, WIRE, PLASTIC	24	100258	CLIP, HEADBAND GUIDE, PLASTIC	38	100610	CUSHION, HEADBAND, FOAM FILLED
11	100522	SCREW, 8-32 X 1/2, PHILLIPS HEAD	25	100393	CLIP, ANTI-ROTATION, YOKE, PLASTIC	39	100674	OPTIONAL - HEADBAND, METAL, LARGE
12	100521	SCREW, 8-32 X 3/8, PHILLIPS HEAD	26	100514	HEADBAND, METAL, STANDARD	40	100673	OPTIONAL - HEADBAND, METAL, YOUTH
13	100523	SCREW, 8-32 X 5/8, PHILLIPS HEAD	27	100516	BRACKET, YOKE SUPPORT WITH TANG			
14	100515	YOKE, EAR CUP MOUNT, METAL	28	100385	WASHER, SPRING, BOOM ADAPTER			