

The headset parts may be cleaned with mild soap and water using a soft cloth. Then dry immediately. **Caution: Do Not immerse** any part of the headset in water or any other liquid. Be especially careful not to allow the microphone to become wet! Exposure to moisture may cause internal corrosion and failure and will void your manufacturers warranty.

Cleaning will help the headset maintain its "like new" condition for many years.

### WINDSCREEN

The microphone windscreen will reduce annoying wind noise and breath pops picked up by headset microphones. It also protects the microphone element from dirt and moisture. The windscreen should be washed regularly to maintain hygiene and avoid clogging. Wash in warm water and mild soap. Rinse thoroughly and make sure it is completely dry before putting it back on.

To remove the windscreen, take out the screw that holds the microphone on the boom and grasp the windscreen lightly along its entire length and slip it off.

Put the windscreen on the microphone by gently pulling from the open end. Do not pull it so tightly that it stretches against the end of the microphone.

### WARRANTY

Your headset is covered by a limited three-year parts and labor warranty. Please see the enclosed warranty card for details.

You may refer to the parts list on the reverse side, if you choose to replace parts yourself. The parts list describes parts for this particular headset only. Parts lists for other models are available on our Web Site or can be obtained by contacting Sigtronics Corporation.



Sigtronics Corporation  
178 East Arrow Highway  
San Dimas, CA 91773  
**Phone:** 909 305-9399  
**E-mail:** info@sigtronics.com  
**Web Site:** www.sigtronics.com

# Model S-41 Headset Instructions

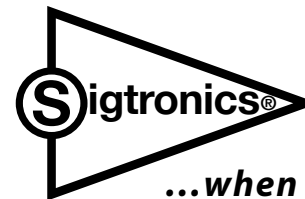
The S-41 series headsets are adjusted at the factory for immediate use with all current standard radio systems in general aviation aircraft. Headsets equipped with two plugs are the standard configuration. The headphone plug is the larger diameter plug and should be inserted into the headphone jack (.250" standard monaural jack). The mic plug is the smaller diameter plug and should be inserted into the microphone jack (.206" standard microphone jack).

The headband is adjustable through a full range of motion, or the locking nuts may be tightened to allow you to custom fit the headset. Place the headset over your head, adjust the slides up until minimum pressure is felt on the top of your head. The headset is now properly adjusted. For maximum noise attenuation, the clamping pressure has been set at the factory. Releasing the clamping pressure by bending the headband is not advised, because loss of attenuation will result. **Note:** If especially small (children) or medium sized headbands are needed, they may be ordered from Sigtronics.

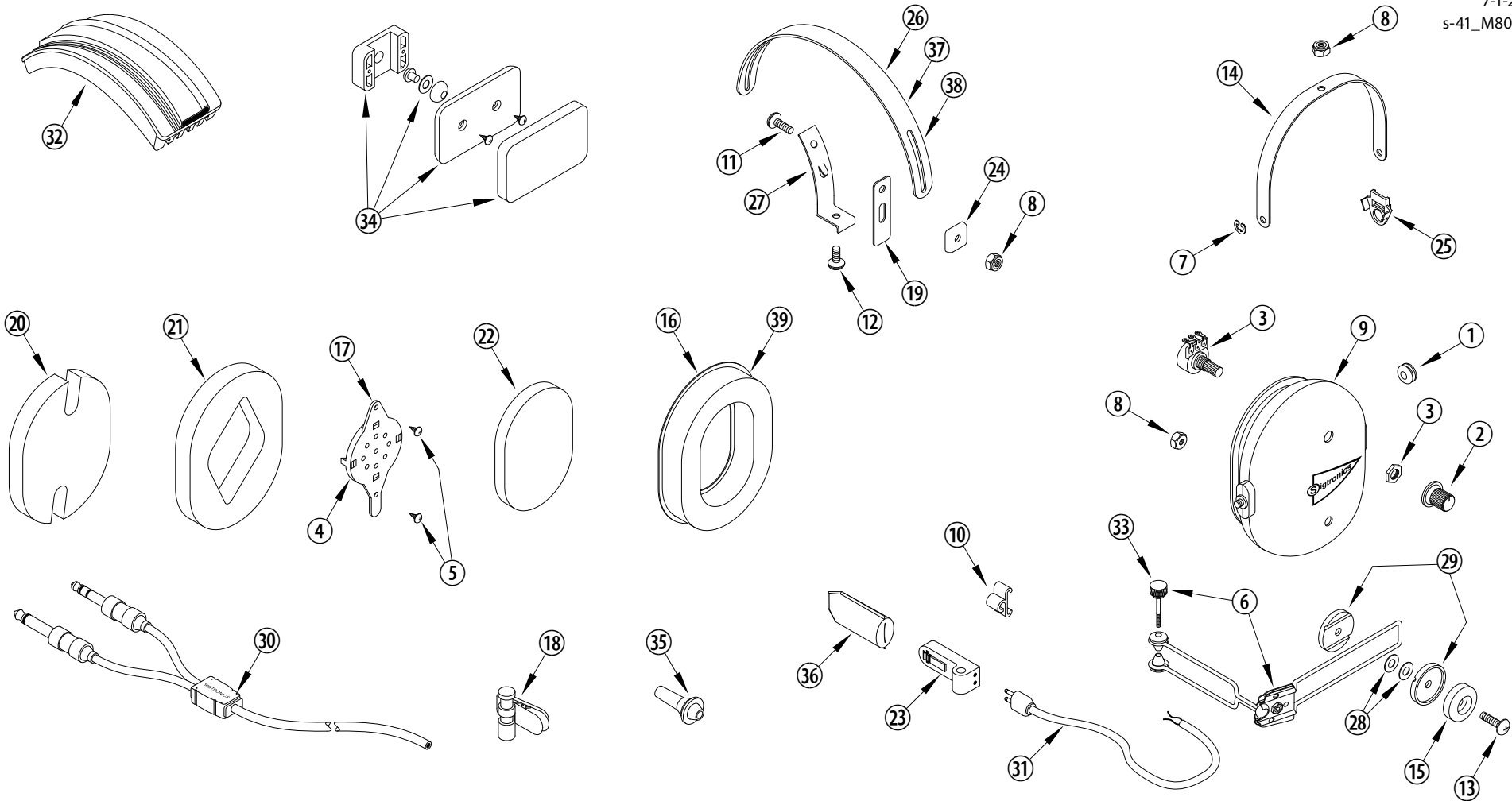
The microphone boom is fully adjustable and will rotate 360 degrees for use on the left or right side of the head. The locking screw that secures the boom to the ear cup is factory set to insure the correct tension. Turning it will not change the tension, because the nut on the inside of the cup will turn as well. **Microphone placement should be at the corner of the mouth, approximately 1/4" from the lips.** The exclusive thumbscrew on the mic boom may be used to assure proper adjustment.

When you first connect the headset, turn the volume control on the headset up to the full clockwise position, then adjust the listening volume with the audio control of either your radio or intercom as appropriate. Passengers should also turn their individual headset volumes up fully. Doing this allows for a full range of adjustment for each passenger, since those with the most acute hearing can turn their headset volume down, if necessary.

continued on back...



**...when it counts!**



### SIGTRONICS S-41 HEADSET PARTS IDENTIFICATION BREAKDOWN

ITEM	P/N	DESCRIPTION	ITEM	P/N	DESCRIPTION	ITEM	P/N	DESCRIPTION
1	100049	GROMMET, 5/16 INCH, RUBBER	14	100367	YOKE, EAR CUP MOUNT, METAL	27	100384	BRACKET, YOKE SUPPORT WITH TANG
2	100360	KNOB, BLACK, VOLUME	15	100368	KNOB, MICROPHONE BOOM ADAPTER, PLASTIC	28	100385	WASHER, SPRING, BOOM ADAPTER
3	100365	POTENTIOMETER, 2K	16	100369	EAR SEAL, FOAM FILLED	29	100408	WASHER, GROOVED BOOM
4	100079	RECEIVER, 300 OHM, MONO	17	100370	RECEIVER MOUNT, HEADSET	30	100838	CABLE, HEADSET, MONAURAL
5	100108	SCREW, 4-40 X 1/4, THREAD FORMING	18	100579	CLIP, CLOTHING, HEADSET CABLE	31	800039	CABLE, MICROPHONE BOOM, 12 INCH
6	100249	BOOM, ELECTRET MICROPHONE SUPPORT, SWIVEL	19	100373	SLIDE, YOKE BRACKET, LONG, NYLON	32	800150	HEADBAND, WITH CUSHION, S-41
7	100251	E-RING, EAR CUP TO YOKE RETAINER	20	100374	FOAM, SOUND ATTENUATING. NOTCHED, 1/2 INCH	33	100156	SCREW, THUMB, MICROPHONE BOOM, 2-56 X 1
8	100252	NUT, HEX, 8-32, LOCKING	21	100376	FOAM, SOUND ATTENUATING. RECEIVER HOLE, 1/2 INCH	34	800118	HEAD PAD ASSEMBLY, SIDE, WITH CUSHION, S-41
9	100401	EAR CUP, PRINTED AND DRILLED	22	100379	FOAM, SOUND ATTENUATING, RECEIVER COVER, 1/4 INCH	35	100569	STRAIN RELIEF, CABLE
10	100371	MICROPHONE CABLE CLIP	23	800082	MICROPHONE, ELECTRET, M-80	36	900084	WINDSCREEN, MICROPHONE
11	100363	SCREW, 8-32 X 1/2, PHILLIPS HEAD	24	100258	CLIP, HEADBAND GUIDE, PLASTIC	37	100383	OPTIONAL - HEADBAND, METAL, STANDARD
12	100364	SCREW, 8-32 X 3/8, PHILLIPS HEAD	25	100393	CLIP, ANTI-ROTATION, YOKE, PLASTIC	38	100618	OPTIONAL - HEADBAND, METAL, YOUTH
13	100377	SCREW, 8-32 X 5/8, PHILLIPS HEAD	26	100257	HEADBAND, METAL, LARGE	39	100402	OPTIONAL - EAR SEAL, GEL FILLED