

The headset parts may be cleaned with mild soap and water using a soft cloth. Then dry immediately. **Caution: Do Not immerse** any part of the headset in water or any other liquid. Be especially careful not to allow the microphone to become wet! Exposure to moisture may cause internal corrosion and failure and will void your manufacturers warranty.

Cleaning will help the headset maintain its "like new" condition for many years.

WINDSCREEN

The microphone windscreen will reduce annoying wind noise and breath pops picked up by headset microphones. It also protects the microphone element from dirt and moisture. The windscreen should be washed regularly to maintain hygiene and avoid clogging. Wash in warm water and mild soap. Rinse thoroughly and make sure it is completely dry before putting it back on.

To remove the windscreen, carefully grasp the windscreen lightly along its entire length and remove from the microphone element being careful not to twist the element itself.

Put the windscreen on the microphone by gently pulling from the open end. Do not pull it so tightly that it stretches against the end of the microphone.

WARRANTY

Your headset is covered by a limited five-year parts and labor warranty. Please see the enclosed warranty card for details.

You may refer to the parts list on the reverse side, if you choose to replace parts yourself. The parts list describes parts for this particular headset only. Parts lists for other models are available on our Web Site or can be obtained by contacting Sigtronics Corporation.



Sigtronics Corporation
178 East Arrow Highway
San Dimas, CA 91773
Phone: 909 305-9399
E-mail: info@sigtronics.com
Web Site: www.sigtronics.com

Model S-18C Headset Instructions

The S-18C series headset is adjusted at the factory for immediate use. Headsets equipped with two plugs are the standard configuration. The headphone plug is the larger diameter plug and should be inserted into the headphone jack (.250" standard monaural jack). The mic plug is the smaller diameter plug and should be inserted into the microphone jack (.206" standard microphone jack).

The headband is adjustable through a full range of motion, or the locking nuts may be tightened to allow you to custom fit the headset. Place the headset over your head, adjust the slide up until minimum pressure is felt on the top of your head. The headset is now properly adjusted. For maximum noise attenuation, the clamping pressure of the headband has been set at the factory. Releasing the clamping pressure by bending the headband is not advised, because loss of attenuation will result.

The microphone boom is fully adjustable and will rotate 180 degrees for use on the left or right side of the head.

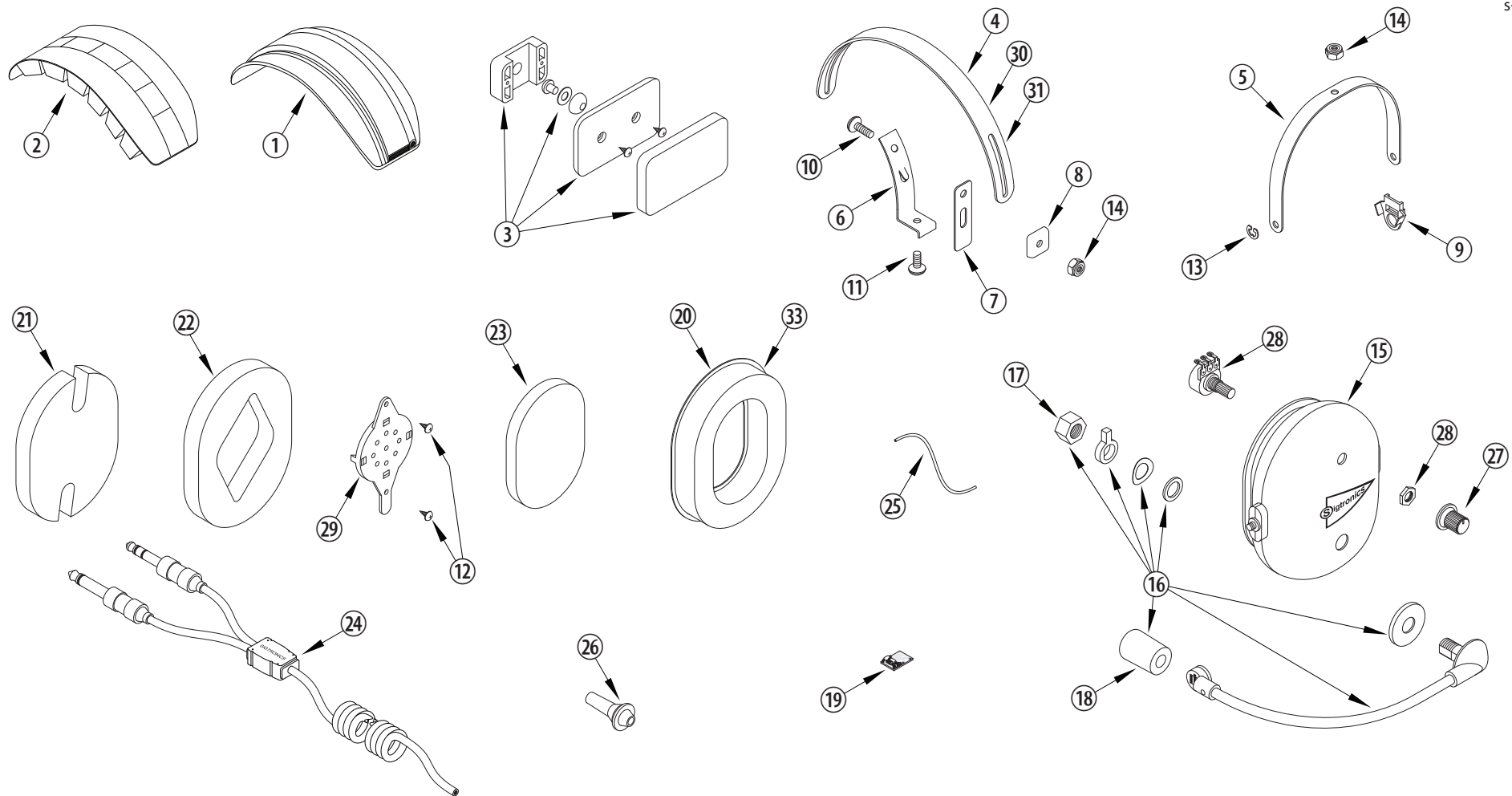
Make sure you are speaking into the side of the mic labeled "Talk" or substantial loss of gain will occur. Microphone placement should be at the corner of the mouth, approximately 1/4" from the lips.

When you first connect the headset, turn the volume control on the headset up to the full clockwise position then adjust the listening volume with the audio control of either your radio or intercom as appropriate. Passengers should also turn their individual headset volumes up fully. Doing this allows for a full range of adjustment for each passenger, since those with the most acute hearing can turn their headset volume down, if necessary.

continued on back...



...when it counts!



SIGTRONICS S-18C HEADSET PARTS IDENTIFICATION BREAKDOWN

ITEM	P/N	DESCRIPTION	ITEM	P/N	DESCRIPTION	ITEM	P/N	DESCRIPTION
1	100619	HEAD BAND EXTRUSION, 6.25 IN., S-18	12	100108	SCREW, 4-40 X 1/4, THREAD FORMING	23	100379	FOAM, SOUND ATTENUATING, RECEIVER COVER, 1/4 INCH
2	100610	CUSHION, HEADBAND, FOAM FILLED	13	100251	E-RING, EAR CUP TO YOKE RETAINER	24	800033	CABLE, HEADSET, MONAURAL, COILED
3	800118	HEAD PAD ASSEMBLY, SIDE , WITH CUSHION, S-18	14	100252	NUT, HEX, 8-32, LOCKING	25	100935	WIRE, #22, JUMPER, HEADSET, 4 INCH
4	100613	HEADBAND, METAL, BLACK, LARGE	15	100936	EAR CUP, PRINTED AND DRILLED, MICROPHONE SIDE	26	100569	STRAIN RELIEF, CABLE
5	100603	YOKE, EAR CUP MOUNT, METAL, BLACK	16	800044	MICROPHONE & FLEX BOOM ASSEMBLY	27	100360	KNOB, BLACK, VOLUME
6	100604	BRACKET, YOKE SUPPORT WITH TANG, BLACK	17	100597	NUT, HEX, 3/8-24, FLEX BOOM ADAPTER	28	100365	POTENTIOMETER, 2K
7	100373	SLIDE, YOKE BRACKET, LONG, NYLON	18	900111	WINDSCREEN, MICROPHONE, FOAM, PACKAGED	29	100858	RECEIVER AND MOUNT, 300 OHM, MONO
8	100258	CLIP, HEADBAND GUIDE, PLASTIC	19	800250	PREAMP	30	100602	OPTIONAL - HEADBAND, METAL, BLACK, STANDRD
9	100393	CLIP, ANTI-ROTATION, YOKE, PLASTIC	20	100402	EAR SEAL, GEL FILLED	31	100672	OPTIONAL - HEADBAND, METAL, BLACK, YOUTH
10	100363	SCREW, 8-32 X 1/2, PHILLIPS HEAD	21	100374	FOAM, SOUND ATTENUATING. NOTCHED, 1/2 INCH	32	100369	OPTIONAL - EAR SEAL, FOAM FILLED
11	100364	SCREW, 8-32 X 3/8, PHILLIPS HEAD	22	100376	FOAM, SOUND ATTENUATING. RECEIVER HOLE, 1/2 INCH			